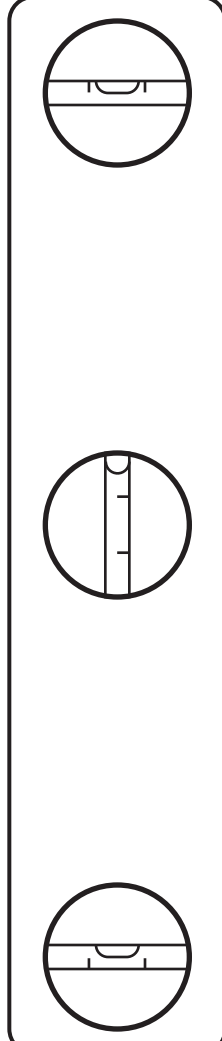
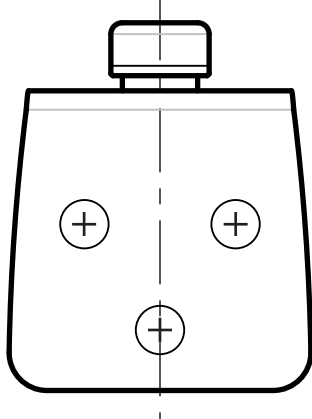


Top



Consult User Guide to determine optimal placement of receiver

Instructions

1. Tape top of template to wall
2. Use level to properly align template
3. Tape bottom of template to wall

Note: template must be flat against wall!

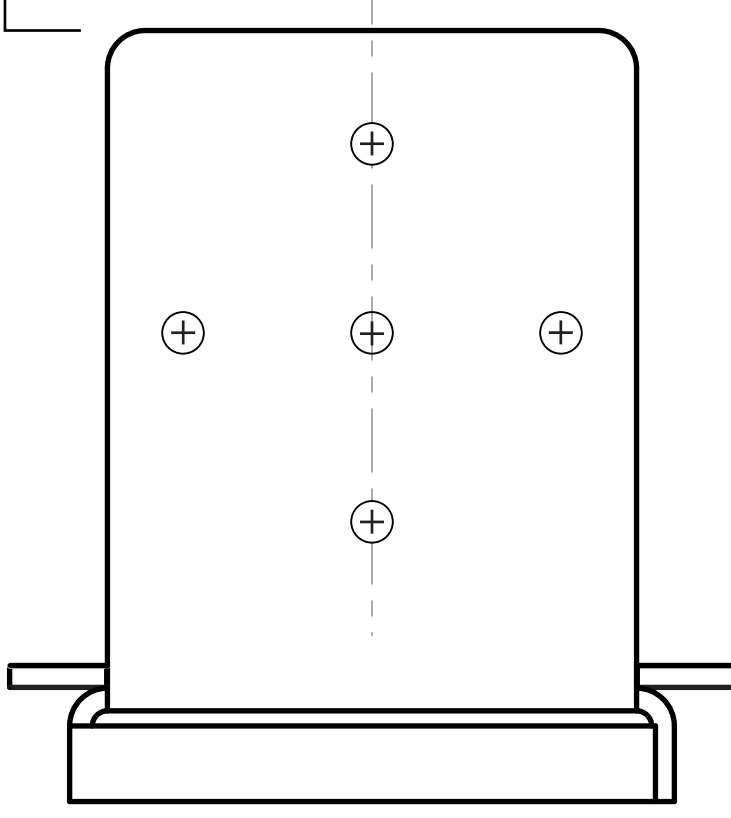
If mounting to drywall:

1. Drill holes for top and bottom mounting bracket using XX in./XX mm drill bit
2. Remove template
3. Insert drywall anchors into holes
4. Attach mounting brackets using screws

If mounting to wood wall reinforcement (stud):

1. Drill pilot holes for top mounting bracket using XX in./XX mm drill bit
2. Drill pilot holes for three vertical holes on bottom mounting bracket using XX in./XX mm drill bit
3. Remove template
4. Attach mounting brackets using screws

61 cm / 24" (inches)



Bottom